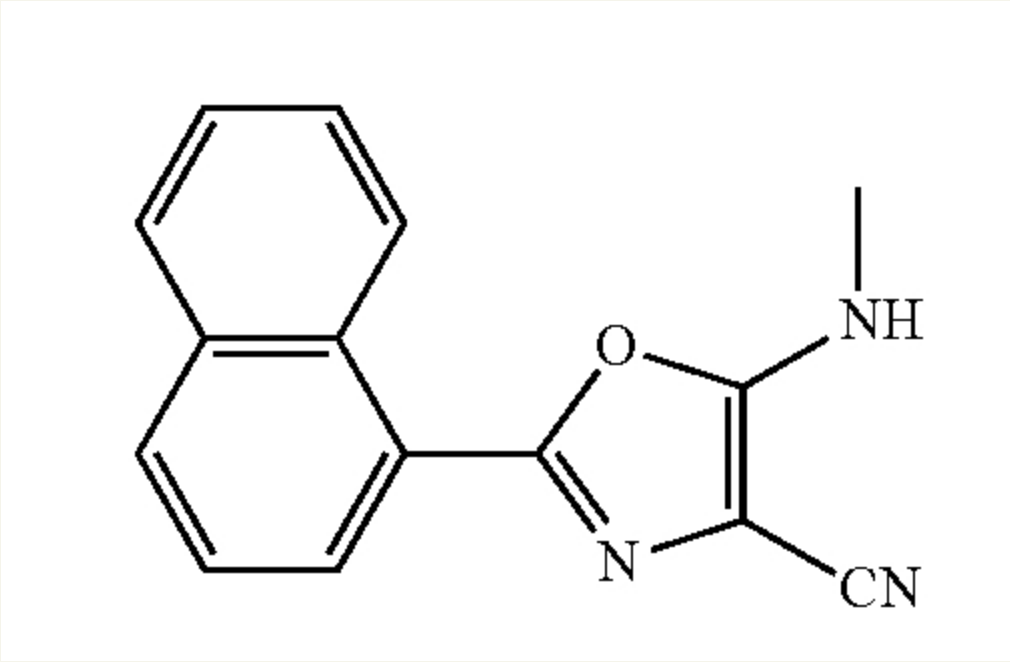




Structure of lead compound: ML351



APPLICATIONS

Potential therepeutic for:

- ▶ diabetes,
- ▶ Alzheimer's,
- ▶ newborn periventricular leukomalacia,
- ▶ breast cancer,
- ▶ stroke
- ▶ atherogenesis

Inhibition of 12/15 lipoxygenase

ADVANTAGES

- ▶ Specifically inhibits 12/15-LOX realtive to 15-LOX, 12-LOX, and 5-LOX
- ▶ Low antioxidant activity
- ▶ Activity in animal models (e.g. protective in stroke model)
- ▶ Good in vivo ADME profile
- ▶ Good brain/plasma ratio (crosses BBB)

INTELLECTUAL PROPERTY INFORMATION

Country	Type	Number	Dated	Case
United States Of America	Issued Patent	<a href="#">10,287,279</a>	05/14/2019	2016-385
European Patent Office	Published Application	3036226	06/29/2016	2016-385
Canada	Published Application	2015/027146 A1	02/26/2015	2016-385
Switzerland	Published Application			2016-385
Germany	Published Application			2016-385
France	Published Application			2016-385
United Kingdom	Published Application			2016-385

RELATED MATERIALS

- ▶ [Discovery of ML351, a Potent and Selective Inhibitor of Human 15-Lipoxygenase-1](#) - 01/13/2014

ADDITIONAL TECHNOLOGIES BY THESE INVENTORS

- ▶ [COMPOUNDS FOR MODULATING EPITHELIAL 15-\(S\)-LIPOXYGENASE-2 AND METHODS OF USE FOR SAME](#)
- ▶ [15LOX1 Inhibitor Formulation Determination For IV Administration](#)
- ▶ [15Lox1 Inhibitors For Stroke](#)
- ▶ [Novel Human 12-Lipoxygenase \(Lox\) Inhibitors](#)

<b>University of California, Santa Cruz</b> <b>Industry Alliances &amp; Technology Commercialization</b> Kerr 413 / IATC, Santa Cruz,CA 95064	Tel: 831.459.5415 <a href="mailto:innovation@ucsc.edu">innovation@ucsc.edu</a> <a href="https://officeofresearch.ucsc.edu/">https://officeofresearch.ucsc.edu/</a> Fax: 831.459.1658	© 2023, The Regents of the University of California <a href="#">Terms of use</a> <a href="#">Privacy Notice</a>
--	---	---